

MICRO 5



MICRO5

We were already small. Now we've gone MICRO.

- At less than half the size of our standard fixture offerings, MICRO 5 offers profiles as small as a pencil
- Profiles suit a variety of needs including integration into drywall and angled beams for undershelf and undercabinet purposes
- Smaller form factor integrates into the tightest architectural details
- All MICRO 5 products have Declare labels
- Mounting hardware options, including stainless steel and magnet clips, ensure optimal installation



TILT

ALTA

ATOM

KICKER

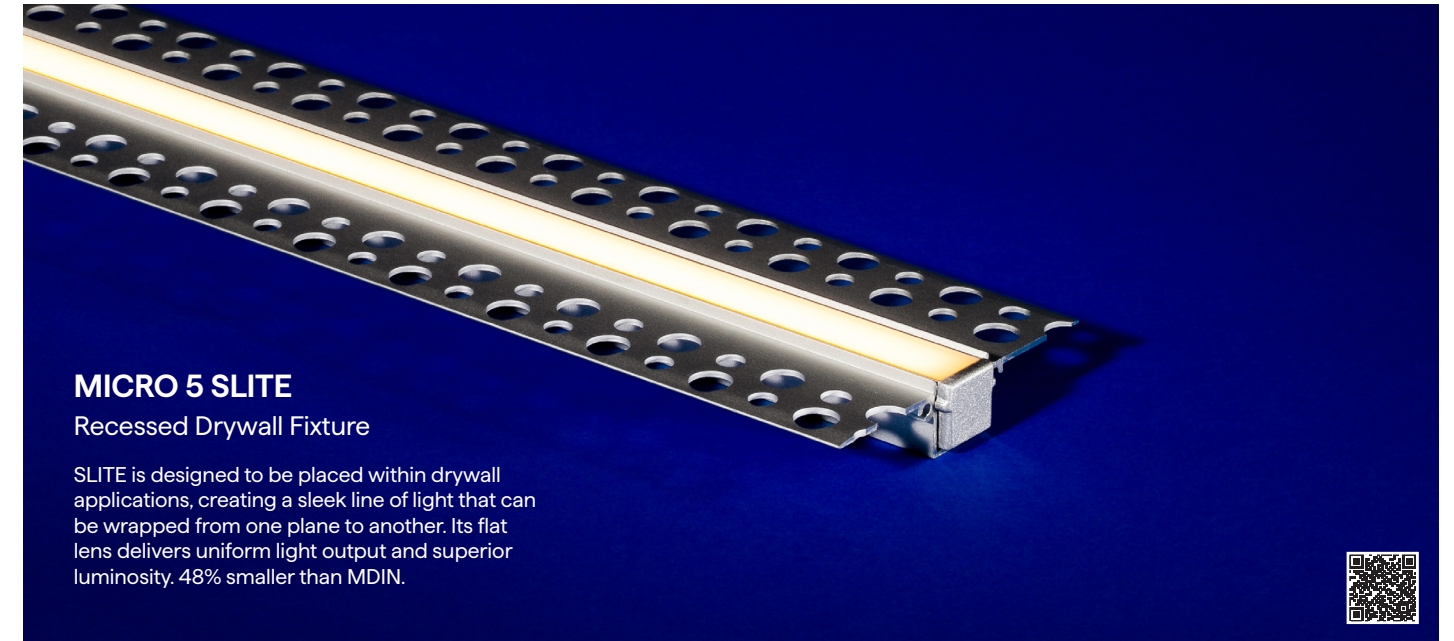
SLITE

Declare.



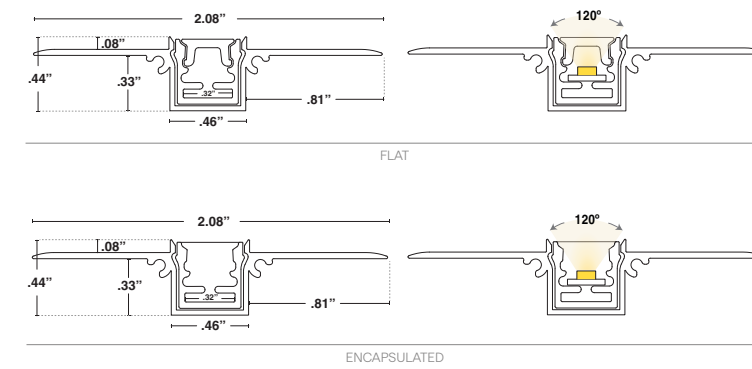


Product shown: SLITE

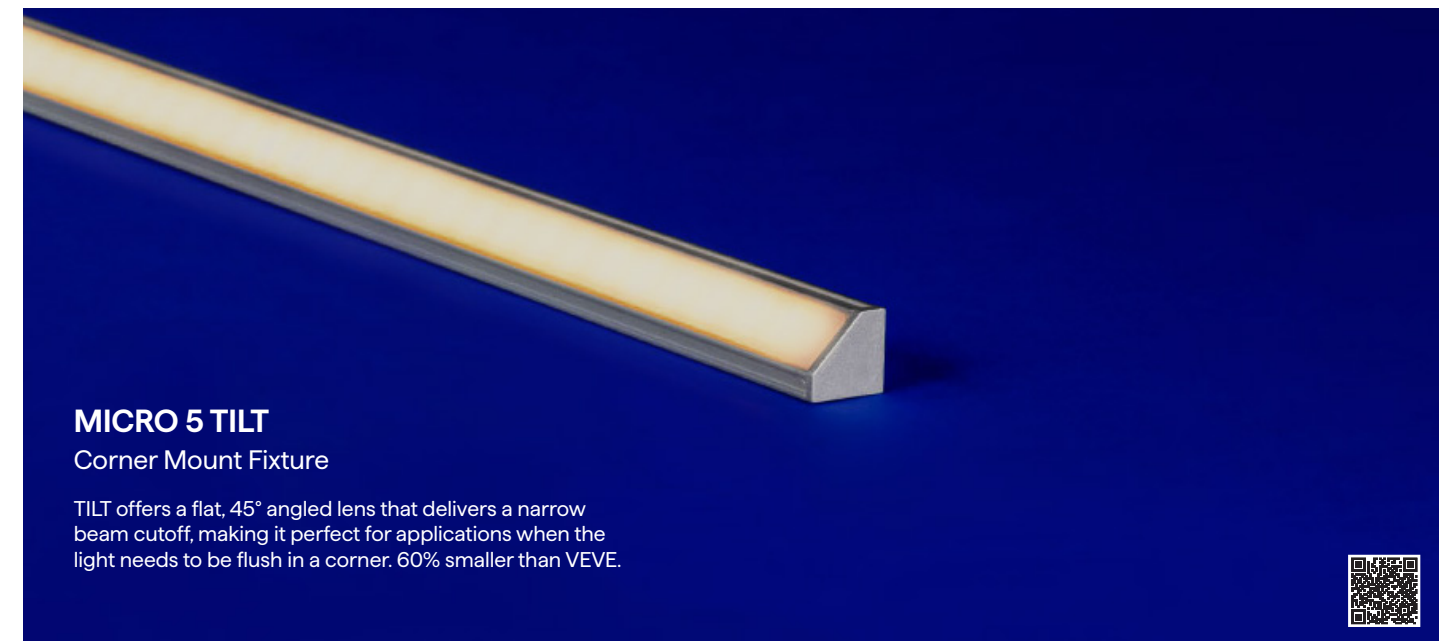
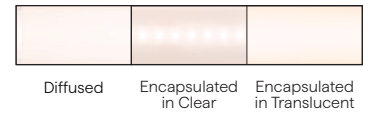


MICRO 5 SLITE
Recessed Drywall Fixture

SLITE is designed to be placed within drywall applications, creating a sleek line of light that can be wrapped from one plane to another. Its flat lens delivers uniform light output and superior luminosity, 48% smaller than MDIN.

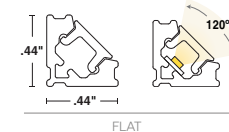


Diode Visibility



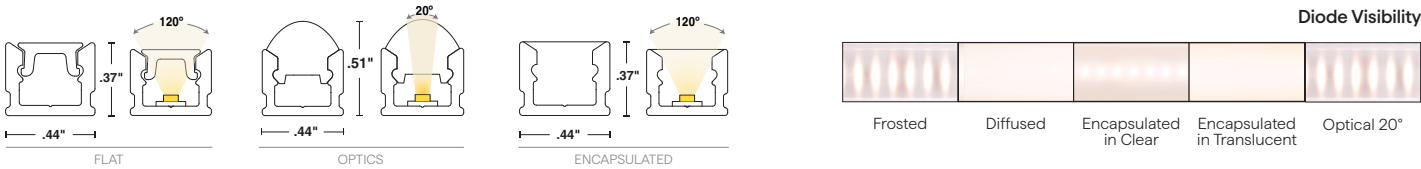
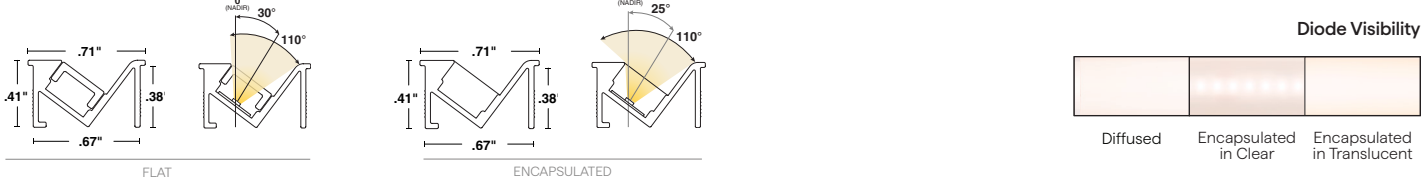
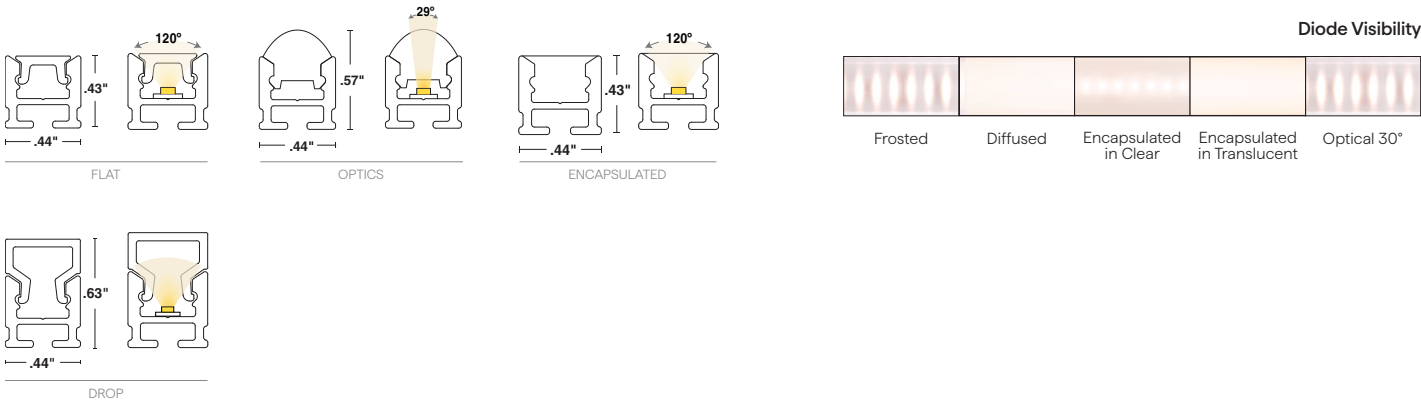
MICRO 5 TILT
Corner Mount Fixture

TILT offers a flat, 45° angled lens that delivers a narrow beam cutoff, making it perfect for applications when the light needs to be flush in a corner. 60% smaller than VEVE.



Diode Visibility





Our unwavering commitment to quality, backed by rigorous manufacturing processes and stringent quality control, has solidified our position as a trusted leader in the lighting industry. Our focus on quality has defined our reputation, and we pledge to deliver the highest-value products and services with a satisfaction guarantee, no matter the job or issue. QTL stands resolute in this promise, taking immense pride in consistently delivering exceptional quality every single day.



