

ESSENTIALS





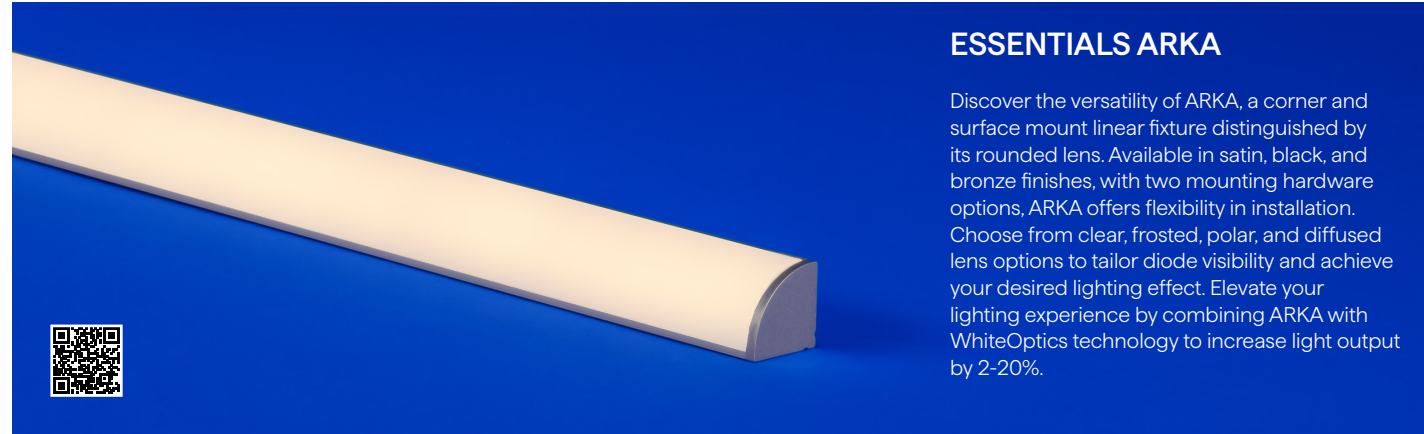
ESSENTIALS

FACTORY BUILT FIXTURES

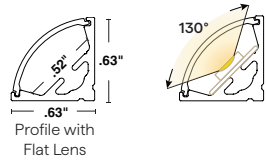
- Fully assembled, made-to-order architectural fixtures
- Crafted from high-quality anodized aluminum for durability
- Diode-free, UV-stable lens options for optimal lighting quality
- Multiple mounting accessories for effortless installation
- All Essentials products have Declare labels

ESSENTIALS ARKA

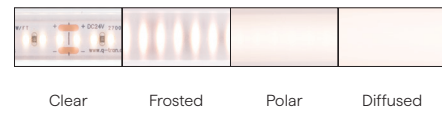
Discover the versatility of ARKA, a corner and surface mount linear fixture distinguished by its rounded lens. Available in satin, black, and bronze finishes, with two mounting hardware options, ARKA offers flexibility in installation. Choose from clear, frosted, polar, and diffused lens options to tailor diode visibility and achieve your desired lighting effect. Elevate your lighting experience by combining ARKA with WhiteOptics technology to increase light output by 2-20%.



FLAT 01

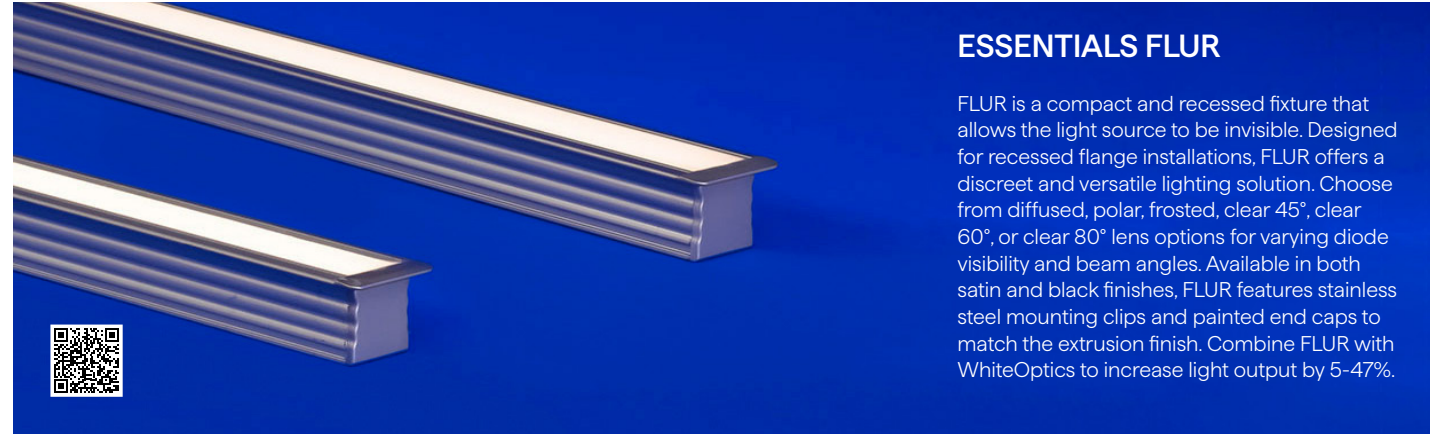


Diode Visibility

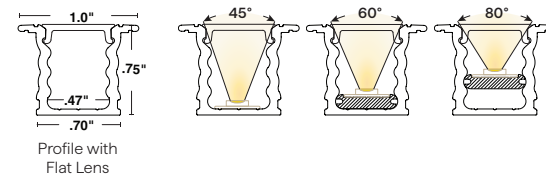


ESSENTIALS FLUR

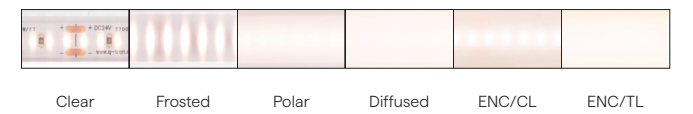
FLUR is a compact and recessed fixture that allows the light source to be invisible. Designed for recessed flange installations, FLUR offers a discreet and versatile lighting solution. Choose from diffused, polar, frosted, clear 45°, clear 60°, or clear 80° lens options for varying diode visibility and beam angles. Available in both satin and black finishes, FLUR features stainless steel mounting clips and painted end caps to match the extrusion finish. Combine FLUR with WhiteOptics to increase light output by 5-47%.



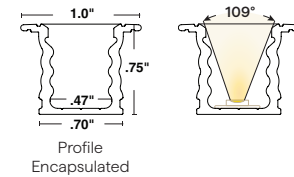
FLAT 01



Diode Visibility

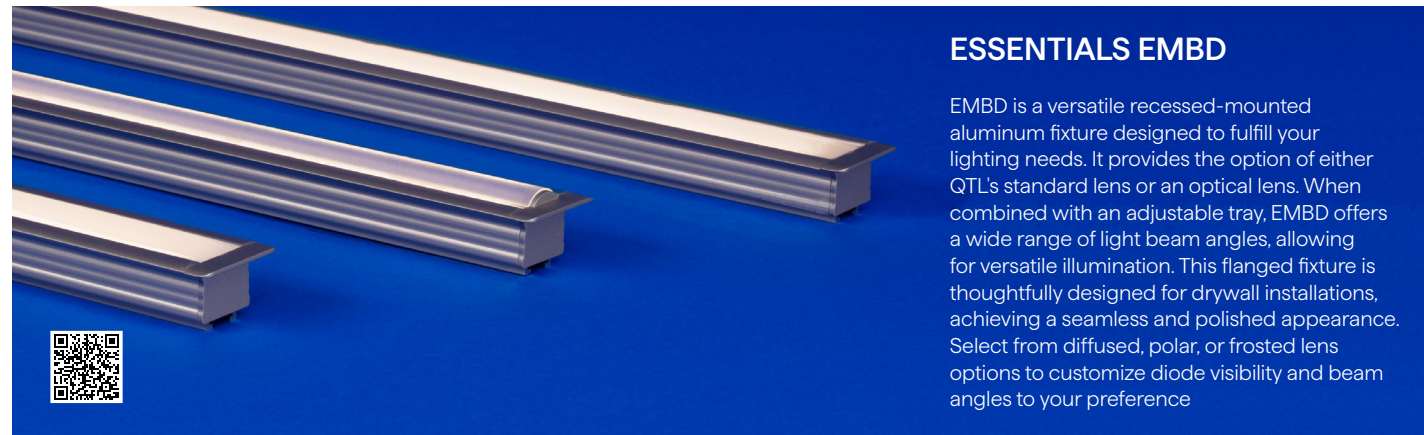


ENC 03

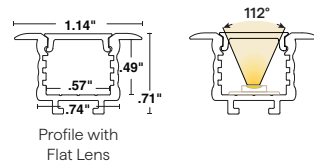


ESSENTIALS EMBD

EMBD is a versatile recessed-mounted aluminum fixture designed to fulfill your lighting needs. It provides the option of either QTL's standard lens or an optical lens. When combined with an adjustable tray, EMBD offers a wide range of light beam angles, allowing for versatile illumination. This flanged fixture is thoughtfully designed for drywall installations, achieving a seamless and polished appearance. Select from diffused, polar, or frosted lens options to customize diode visibility and beam angles to your preference.



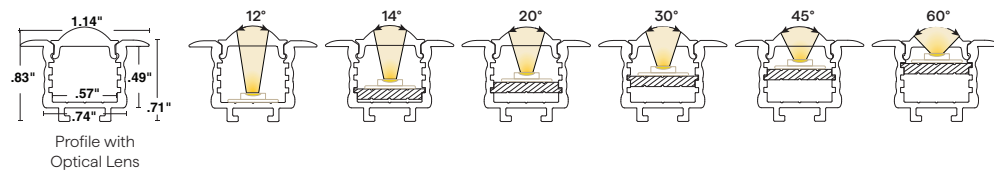
FLAT 01



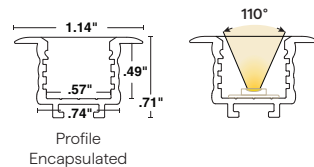
Diode Visibility



OPTICS 02

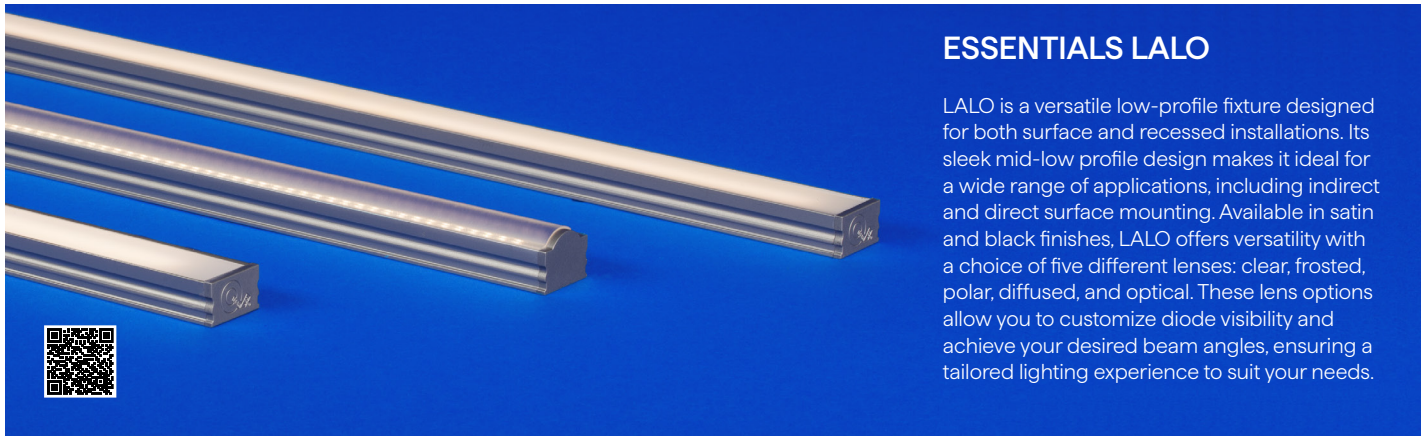


ENC 03



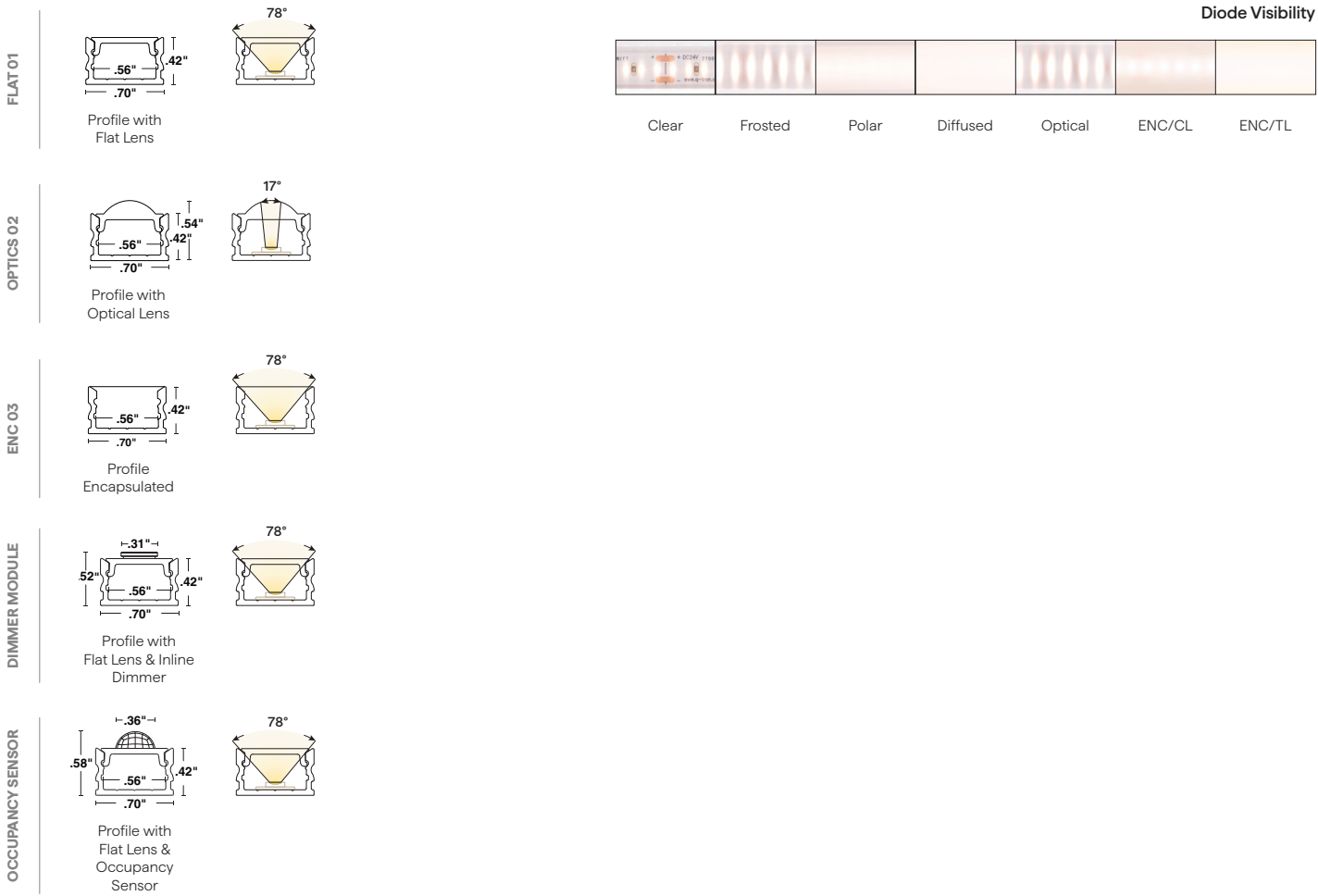
Our unwavering commitment to quality, backed by rigorous manufacturing processes and stringent quality control, has solidified our position as a trusted leader in the lighting industry. Our focus on quality has defined our reputation, and we pledge to deliver the highest-value products and services with a satisfaction guarantee, no matter the job or issue. QTL stands resolute in this promise, taking immense pride in consistently delivering exceptional quality every single day.



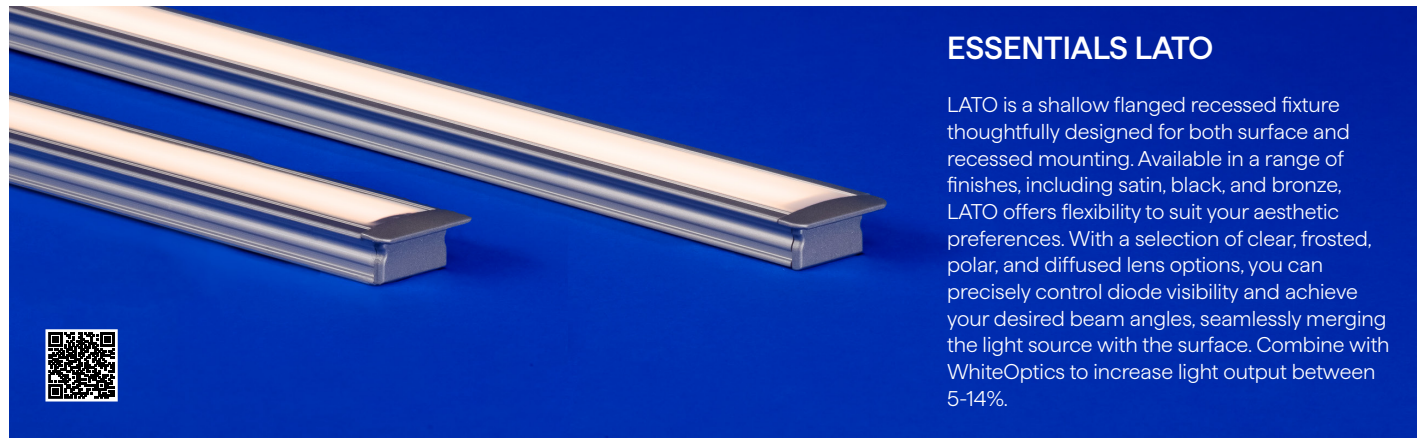


ESSENTIALS LALO

LALO is a versatile low-profile fixture designed for both surface and recessed installations. Its sleek mid-low profile design makes it ideal for a wide range of applications, including indirect and direct surface mounting. Available in satin and black finishes, LALO offers versatility with a choice of five different lenses: clear, frosted, polar, diffused, and optical. These lens options allow you to customize diode visibility and achieve your desired beam angles, ensuring a tailored lighting experience to suit your needs.

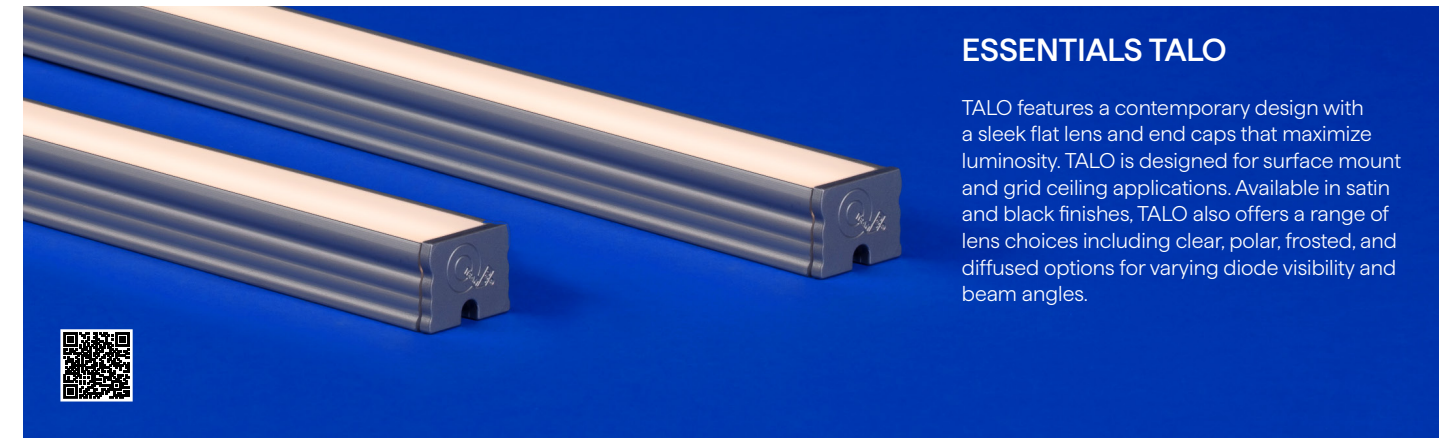
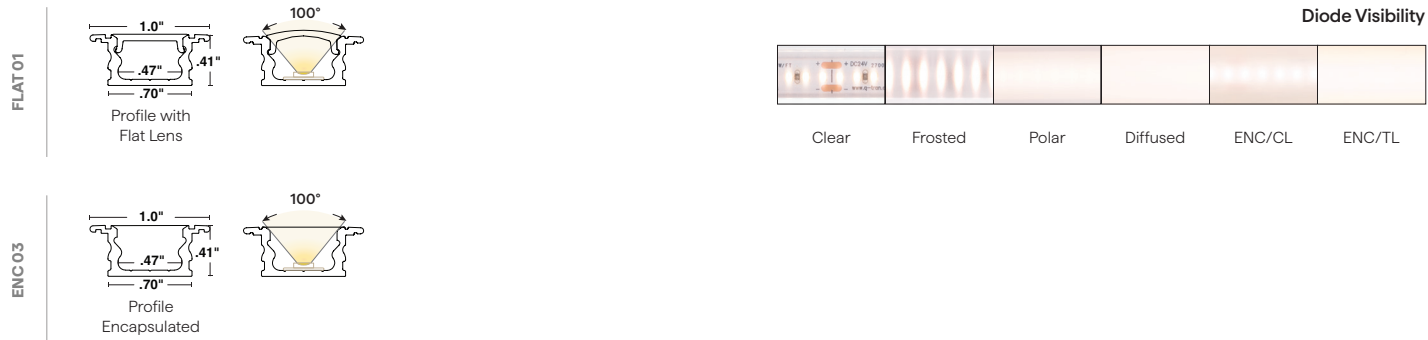


Product shown: LALO



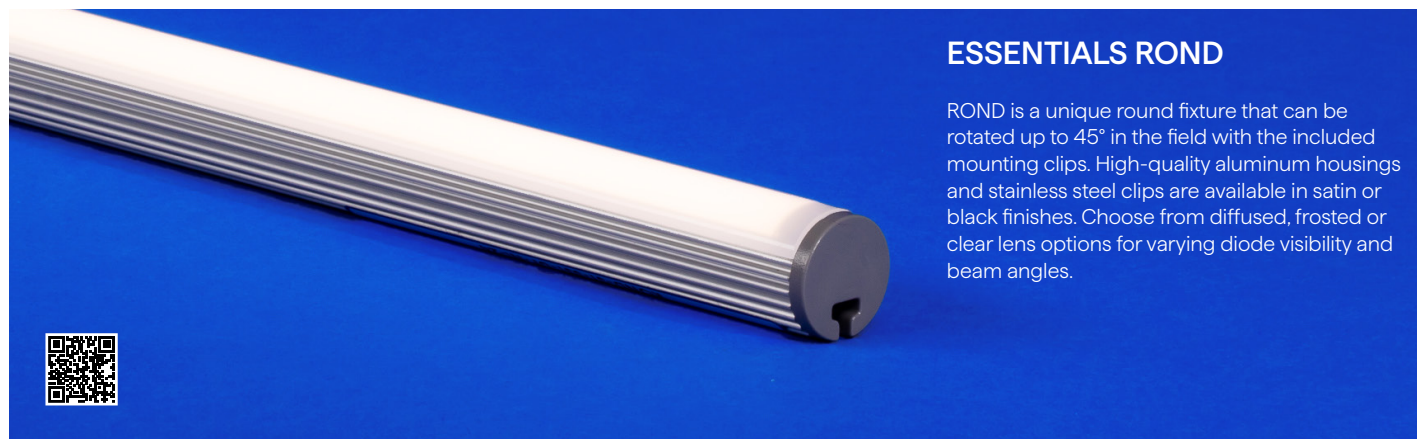
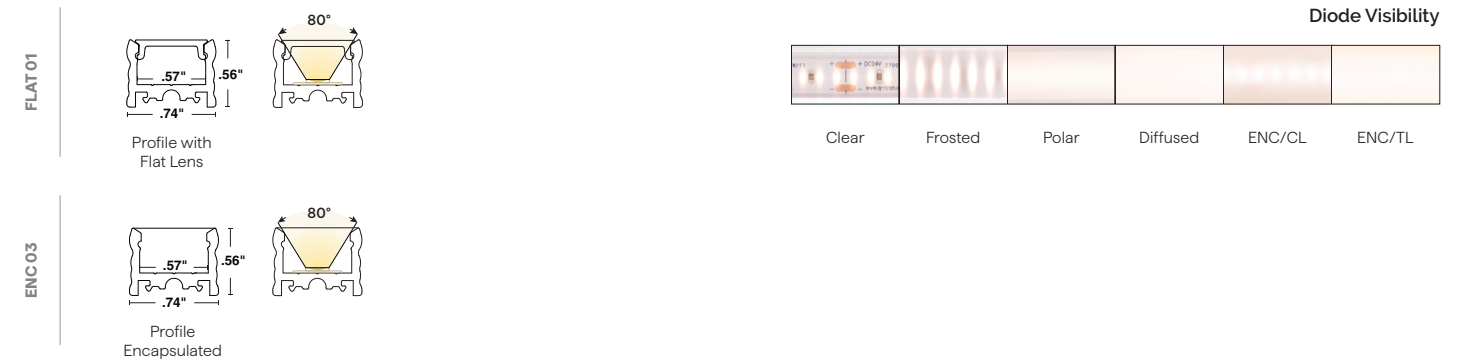
ESSENTIALS LATO

LATO is a shallow flanged recessed fixture thoughtfully designed for both surface and recessed mounting. Available in a range of finishes, including satin, black, and bronze, LATO offers flexibility to suit your aesthetic preferences. With a selection of clear, frosted, polar, and diffused lens options, you can precisely control diode visibility and achieve your desired beam angles, seamlessly merging the light source with the surface. Combine with WhiteOptics to increase light output between 5-14%.



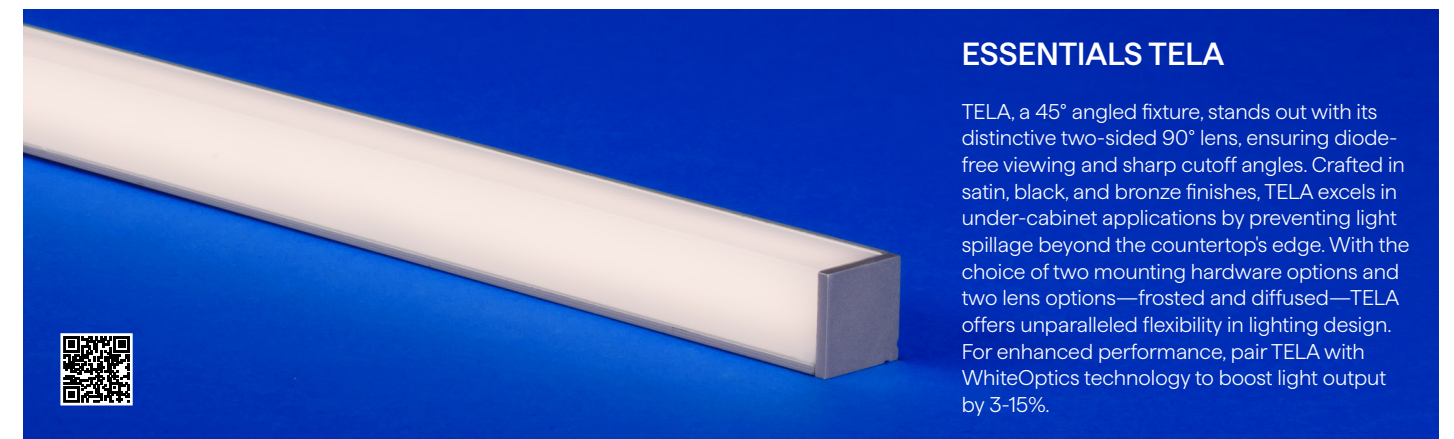
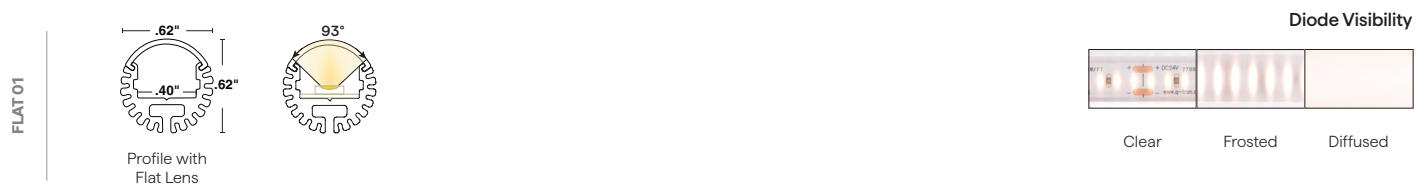
ESSENTIALS TALO

TALO features a contemporary design with a sleek flat lens and end caps that maximize luminosity. TALO is designed for surface mount and grid ceiling applications. Available in satin and black finishes, TALO also offers a range of lens choices including clear, polar, frosted, and diffused options for varying diode visibility and beam angles.



ESSENTIALS ROND

ROND is a unique round fixture that can be rotated up to 45° in the field with the included mounting clips. High-quality aluminum housings and stainless steel clips are available in satin or black finishes. Choose from diffused, frosted or clear lens options for varying diode visibility and beam angles.



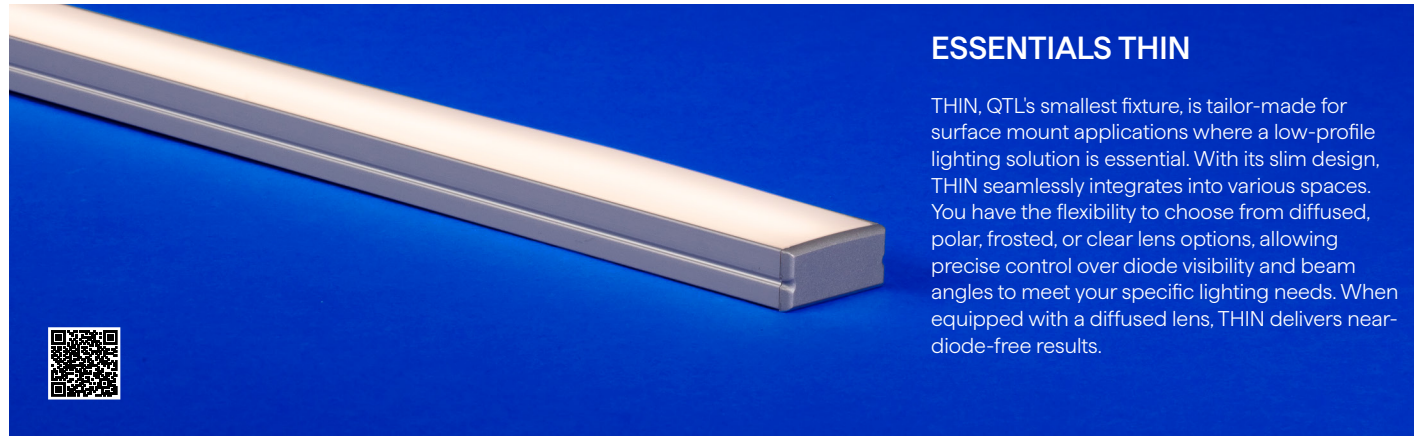
ESSENTIALS TELA

TELA, a 45° angled fixture, stands out with its distinctive two-sided 90° lens, ensuring diode-free viewing and sharp cutoff angles. Crafted in satin, black, and bronze finishes, TELA excels in under-cabinet applications by preventing light spillage beyond the countertop's edge. With the choice of two mounting hardware options and two lens options—frosted and diffused—TELA offers unparalleled flexibility in lighting design. For enhanced performance, pair TELA with WhiteOptics technology to boost light output by 3-15%.





Product shown: TELA & LALO Photography by: Nate Sheets Photography

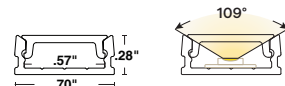


ESSENTIALS THIN

THIN, QTL's smallest fixture, is tailor-made for surface mount applications where a low-profile lighting solution is essential. With its slim design, THIN seamlessly integrates into various spaces. You have the flexibility to choose from diffused, polar, frosted, or clear lens options, allowing precise control over diode visibility and beam angles to meet your specific lighting needs. When equipped with a diffused lens, THIN delivers near-diode-free results.

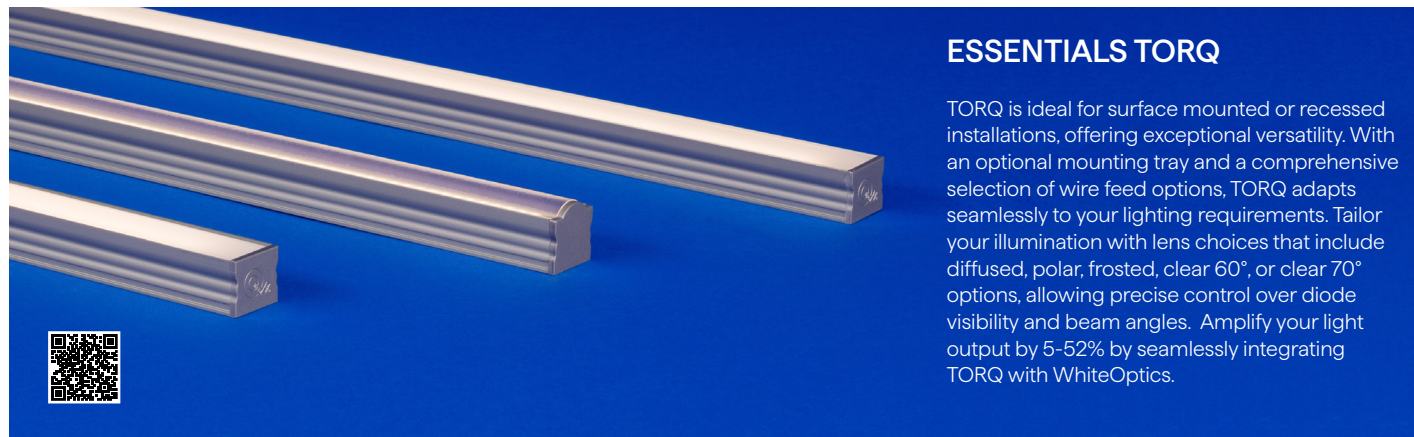
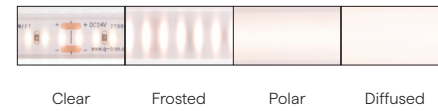


FLAT 01



Profile with Flat Lens

Diode Visibility

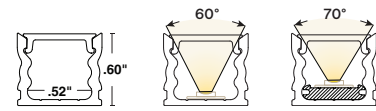


ESSENTIALS TORQ

TORQ is ideal for surface mounted or recessed installations, offering exceptional versatility. With an optional mounting tray and a comprehensive selection of wire feed options, TORQ adapts seamlessly to your lighting requirements. Tailor your illumination with lens choices that include diffused, polar, frosted, clear 60°, or clear 70° options, allowing precise control over diode visibility and beam angles. Amplify your light output by 5-52% by seamlessly integrating TORQ with WhiteOptics.

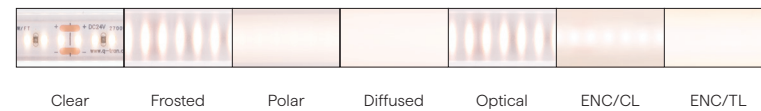


FLAT 01

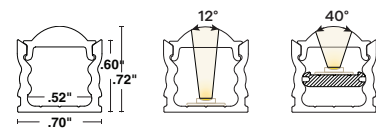


Profile with Flat Lens

Diode Visibility

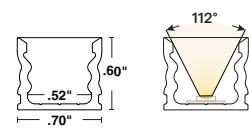


OPTICS 02

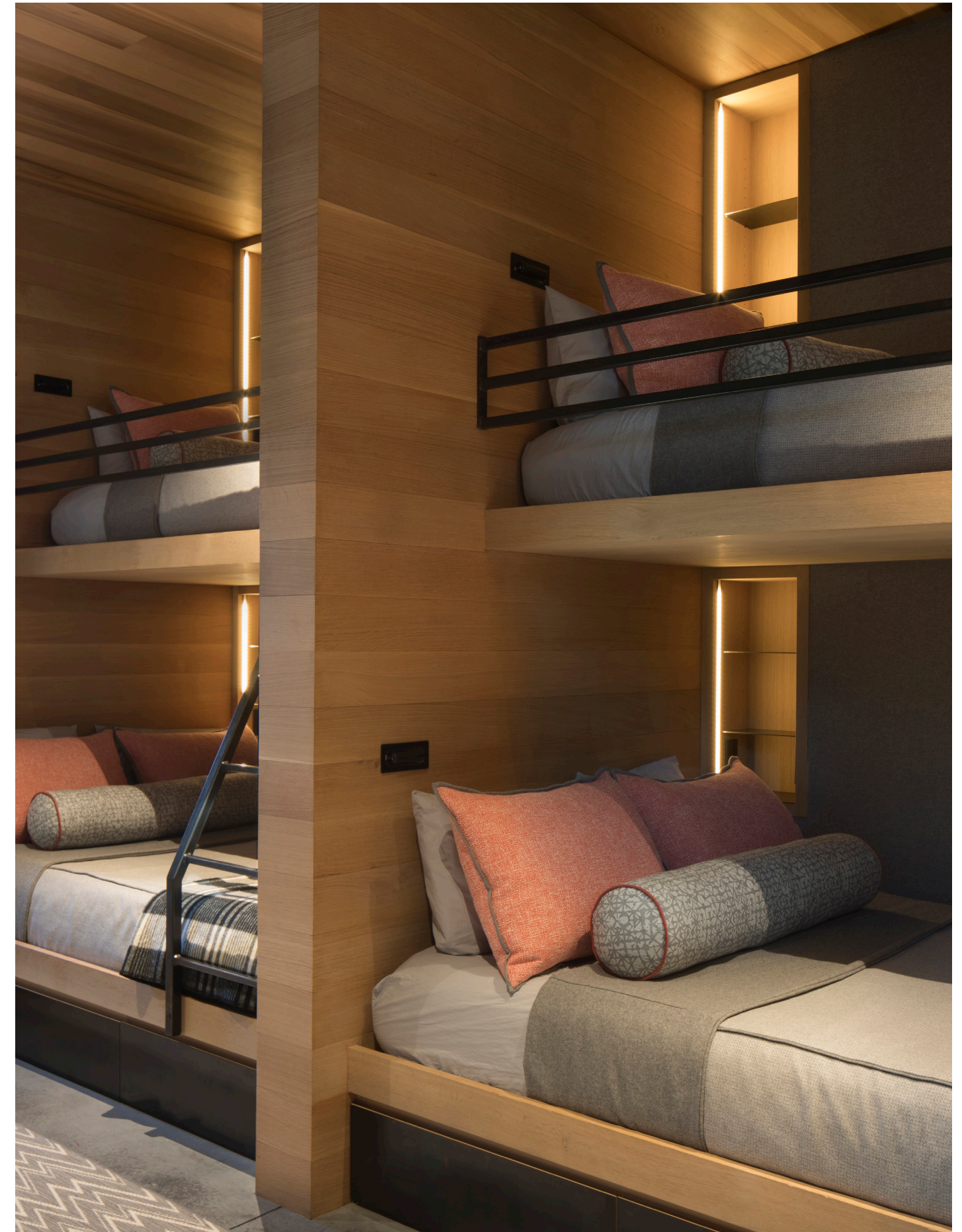


Profile with Optical Lens

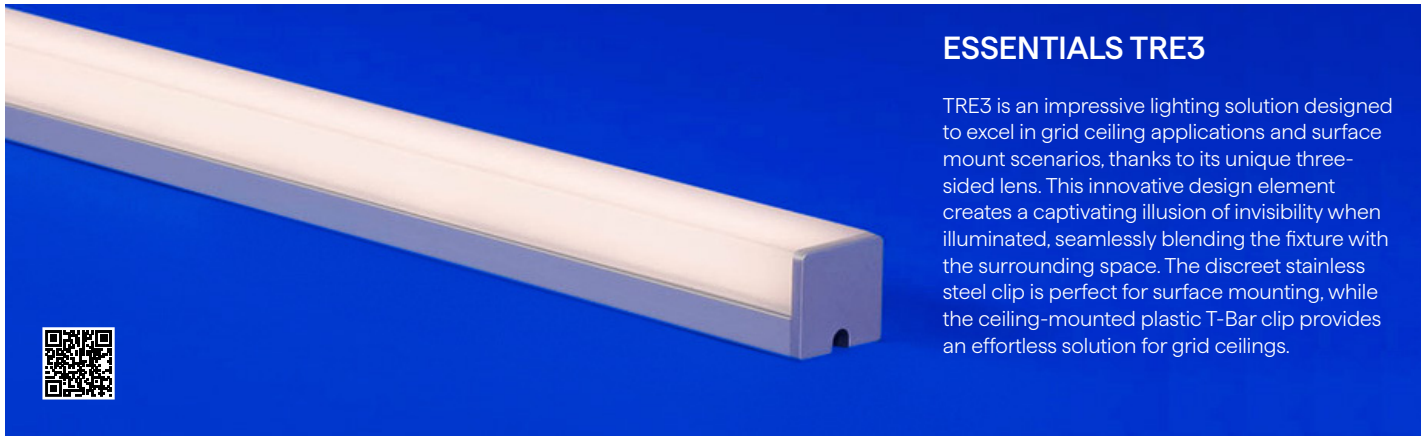
ENC 03



Profile Encapsulated

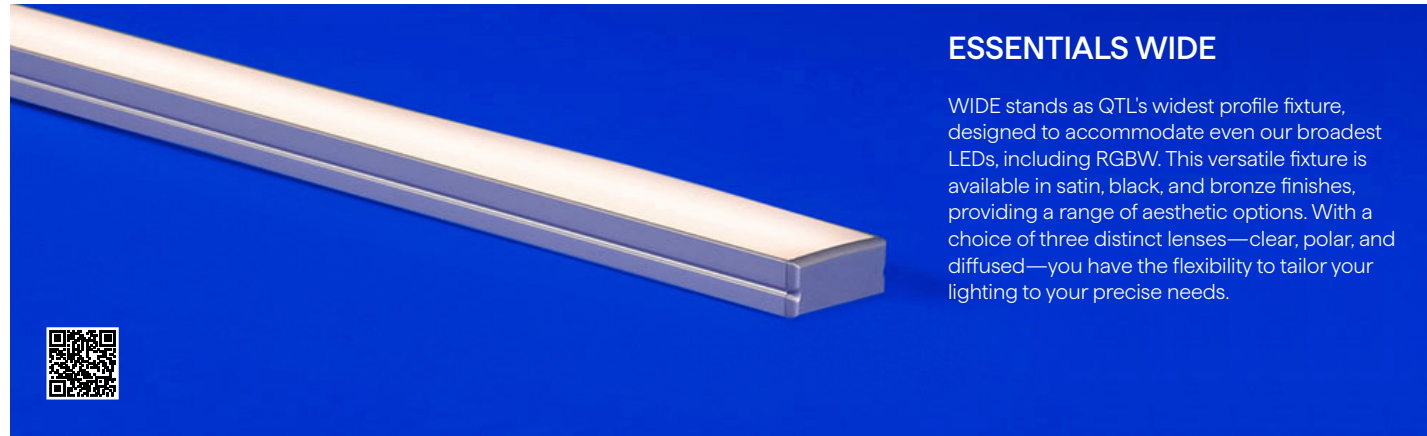


Product shown: THIN



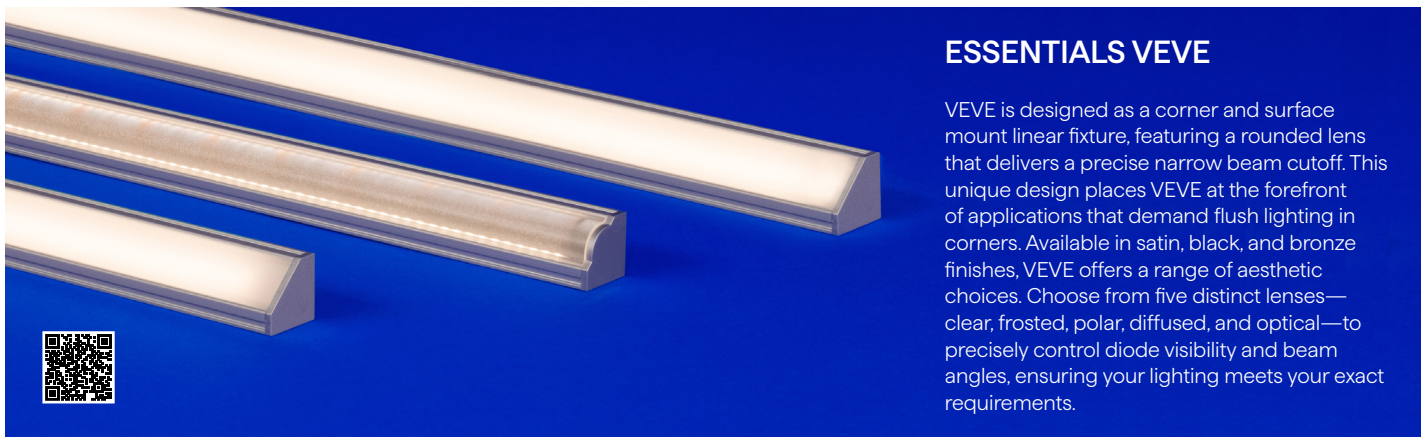
ESSENTIALS TRE3

TRE3 is an impressive lighting solution designed to excel in grid ceiling applications and surface mount scenarios, thanks to its unique three-sided lens. This innovative design element creates a captivating illusion of invisibility when illuminated, seamlessly blending the fixture with the surrounding space. The discreet stainless steel clip is perfect for surface mounting, while the ceiling-mounted plastic T-Bar clip provides an effortless solution for grid ceilings.



ESSENTIALS WIDE

WIDE stands as QTL's widest profile fixture, designed to accommodate even our broadest LEDs, including RGBW. This versatile fixture is available in satin, black, and bronze finishes, providing a range of aesthetic options. With a choice of three distinct lenses—clear, polar, and diffused—you have the flexibility to tailor your lighting to your precise needs.



ESSENTIALS VEVE

VEVE is designed as a corner and surface mount linear fixture, featuring a rounded lens that delivers a precise narrow beam cutoff. This unique design places VEVE at the forefront of applications that demand flush lighting in corners. Available in satin, black, and bronze finishes, VEVE offers a range of aesthetic choices. Choose from five distinct lenses—clear, frosted, polar, diffused, and optical—to precisely control diode visibility and beam angles, ensuring your lighting meets your exact requirements.



QTL proudly offers products suitable for Made in America, Buy American, and Buy America Act projects. Additionally, we are thrilled to announce that the vast majority of our lighting products now come with Declare labels, demonstrating our dedication to sustainability.



